

Features & Benefits

High Quality, Detachable Universal Needle

- ▲ Provides optimum patient comfort
- ▲ Bevel-Up orientation for low angle injection
- ▲ Fits any conventional Luer Lock or Luer Slip syringe
- ▲ Allows for interchange of needles for aspiration and administration

ISO Colour Coded Safety Cover

- ▲ Provides easy identification of Needle Gauge
- ▲ Two cover sizes to accommodate short and long needle lengths
- ▲ Can be adjusted for left or right handed users

Enhanced Safety Locking Mechanism

- ▲ Locking clips secure the needle inside the safety cover – two in the needle cover & two on the secure mechanism
- ▲ Unique mechanism provides enhanced locking at the base of the safety cover

Single-Handed Activation

- ▲ Requires minimal training
- ▲ Almost no change in hand position required to activate

Audible 'Click' Upon Activation

- ▲ Signals that cover is securely locked in place over the needle

G-Med™

Safety Hypodermic Needle

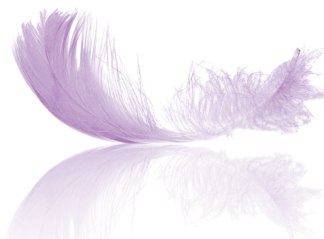
GALAXY-MED™
Medical Safe Products

mobile +48 601 250 088

www.g-med.pl

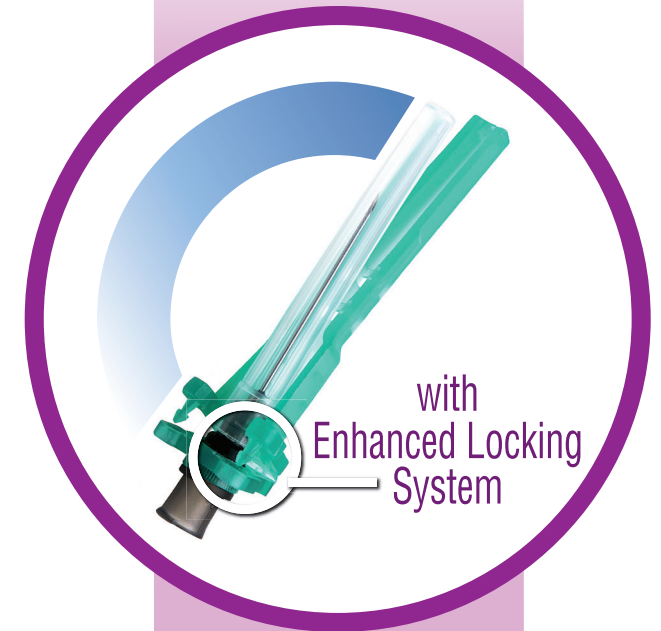
e-mail: office@g-med.pl

Creating
Smart
Solutions
for
Healthcare
Safety



GALAXY-MED™
Medical Safe Products

Safety
Hypodermic
Needle

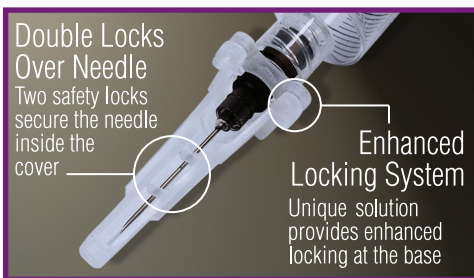


For use with any Conventional
Luer Lock or Luer Slip Syringe

Before Activation



After Activation



G-Med™

Also available, G-Med™ Syringe

The G-Med™ needle is also supplied with a syringe option with safety needle mounted or bi-packed.

Safety Needle Product Options

PRODUCT CODE	SYRINGE SIZE	NEEDLE SIZE (Imperial)	NEEDLE SIZE (Metric)	PIECES PER BOX	PIECES PER CASE
SAFETY HYPODERMIC NEEDLE (other Needle Size Variations Available)					
1101		30 G x 1/2"	0.30 mm x 12.7 mm	50	2500
1102		29 G x 1/2"	0.33 mm x 12.7 mm	50	2500
1103		27 G x 1"	0.4 mm x 25.4 mm	50	2500
1104		27 G x 1/2"	0.4 mm x 12.7 mm	50	2500
1105		27 G x 5/8"	0.4 mm x 15.87 mm	50	2500
1106		26 G x 1"	0.45 mm x 25.4 mm	50	2500
1107		26 G x 1/2"	0.45 mm x 12.7 mm	50	2500
1108		26 G x 5/8"	0.45 mm x 15.87 mm	50	2500
1109		25 G x 5/8"	0.5 mm x 15.87 mm	50	2500
1110		25 G x 3/4"	0.5 mm x 19.05 mm	50	2500
1111		25 G x 1"	0.5 mm x 25.4 mm	50	2500
1112		25 G x 1 1/2"	0.5 mm x 38.10 mm	50	2500
1113		24 G x 1 1/2"	0.55 mm x 38.10 mm	50	2500
1114		24 G x 1"	0.55 mm x 25.4 mm	50	2500
1115		23 G x 1 1/2"	0.60 mm x 38.10 mm	50	2500
1116		23 G x 1"	0.60 mm x 25.4 mm	50	2500
1117		22 G x 1 1/2"	0.70 mm x 38.10 mm	50	2500
1118		22 G x 1"	0.70 mm x 25.4 mm	50	2500
1119		21 G x 1 1/2"	0.80 mm x 38.10 mm	50	2500
1120		21 G x 1"	0.80 mm x 25.4 mm	50	2500
1121		20 G x 1 1/2"	0.90 mm x 38.10 mm	50	2500
1122		20 G x 1"	0.90 mm x 25.4 mm	50	2500
1123		19 G x 1 1/2"	1.10 mm x 38.10 mm	50	2500
1124		19 G x 1"	1.10 mm x 25.4 mm	50	2500
1125		18 G x 1 1/2"	1.20 mm x 38.10 mm	50	2500
1126		18 G x 1"	1.20 mm x 25.4 mm	50	2500
NEEDLE WITH SYRINGE OPTION - LUER LOCK (with Mounted Safety Needle)					
1201	3 MI.	Syringe + Safety Needle		100	1200
1202	5 MI.	Syringe + Safety Needle		100	1200
1203	10 MI.	Syringe + Safety Needle		100	600
NEEDLE WITH SYRINGE OPTION - LUER LOCK (with Bi-Packed Safety Needle)					
1301	3 MI.	Syringe + Safety Needle		100	1200
1302	5 MI.	Syringe + Safety Needle		100	1200
1303	10 MI.	Syringe + Safety Needle		100	600
NEEDLE WITH SYRINGE OPTION - LUER SLIP (with Mounted Safety Needle)					
1401	3 MI.	Syringe + Safety Needle		100	1200
1402	5 MI.	Syringe + Safety Needle		100	1200
1403	10 MI.	Syringe + Safety Needle		100	600
NEEDLE WITH SYRINGE OPTION - LUER SLIP (with Bi-Packed Safety Needle)					
1501	3 MI.	Syringe + Safety Needle		100	1200
1502	5 MI.	Syringe + Safety Needle		100	1200
1503	10 MI.	Syringe + Safety Needle		100	600

Instructions for Use

Step 01

Attach the G-Med™ needle to any Luer Lock or Luer Slip syringe.



Step 02

Pull the safety cover back so that it sits parallel to the syringe barrel allowing for a clear view of the injection site (The safety cover can be twisted to adjust for left or right handed use). Remove the needle shield.



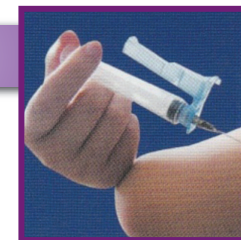
Step 03

Draw up medication in accordance with established protocol.



Step 04

Administer medication according to established protocol.



Step 05

Immediately following injection, the safety cover can be locked over the needle by depressing on a flat surface (an audible click indicates the safety mechanism has been activated). Discard in an approved sharps waste container.

